



Western Balkans Competitiveness Data Hub

OECD High Level Conference on South East Europe
26 June 2024

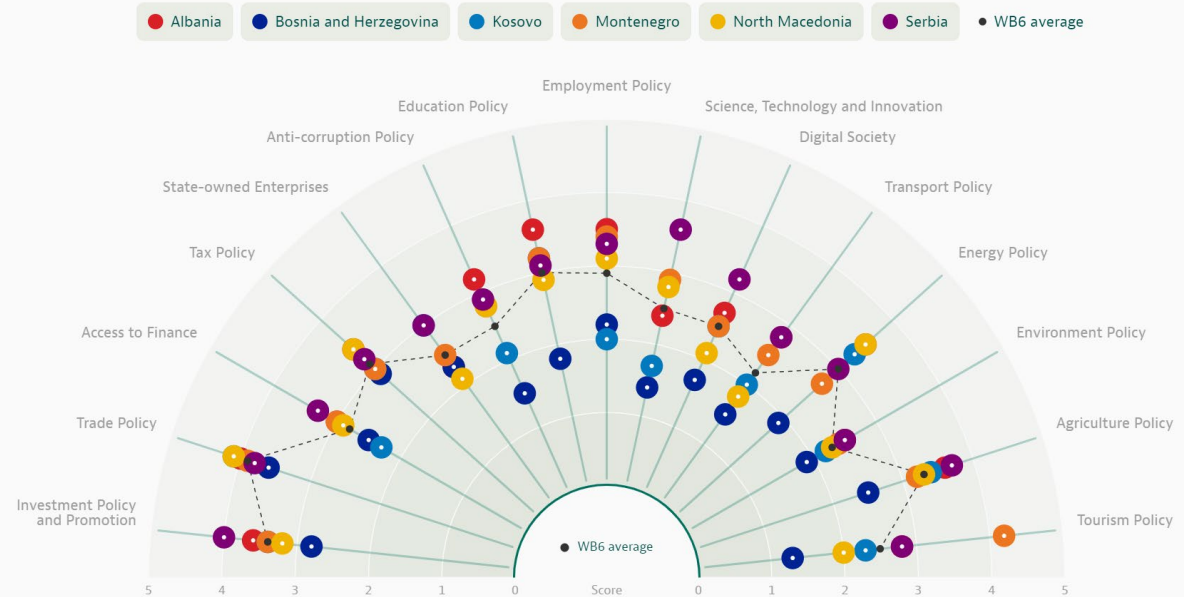
OECD South East Europe Regional Programme





data Hub OVERVIEW

- Transforms complex findings into **user-friendly insights**
- Quickly identify **areas of strengths** and **areas for further improvement**
- Integrates data from **2018, 2021 and 2024 editions** of the *Competitiveness Outlook*
- Serves as a **one-stop shop** that **centralises and makes significant amounts of data accessible**





POLICY DIMENSION VIEW

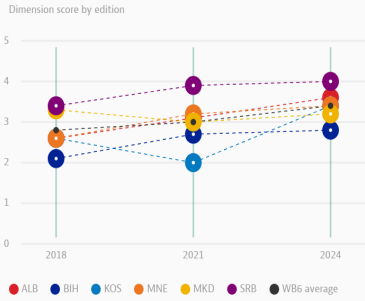
- Allows users to look at performance across **15 assessed policy dimensions** (a total of 147 indicators)
- Look at **evolution of scores over time** (between 2018 and 2024)
- Can select any indicator to see **detailed list of criteria**, showing **rationale for assigned scores**



Policy Dimension 1

Investment Policy and Promotion

The establishment of a robust legal investment framework is essential for fostering a business environment conducive to attracting investors and facilitating sustainable growth. This improvement in the business climate has resulted in a notable increase in FDI inflows across all WB6 economies, with a significant portion, approximately 70%, originating from the EU.



Scoring Criteria

Economy Score 2024

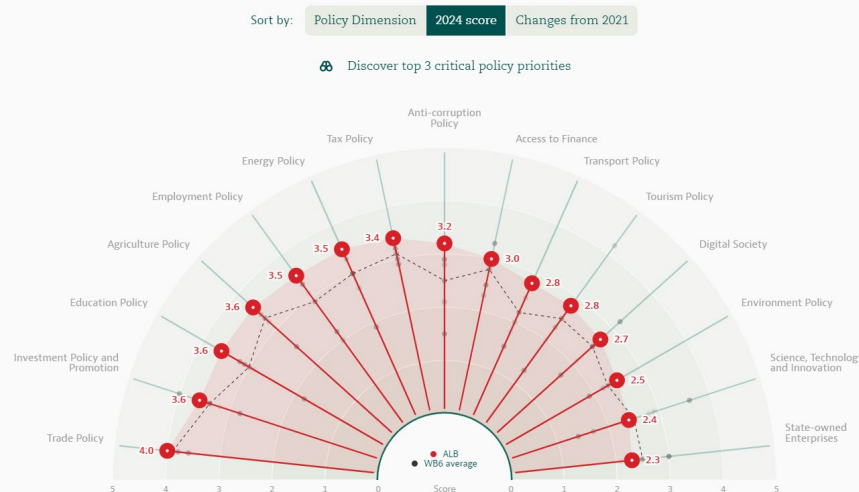


	ALB	BIH	KOS	MNE	MKD	SRB
Level 0	Implemented	Implemented	Implemented	Not Implemented	Not Implemented	Implemented
The investment promotion agency, or relevant body, regularly, occasionally provides investor incentives, with limited oversight.	✓	✓	✓	✗	✗	✓
Investor incentives are provided following a cost-benefit analysis, although the results are not available to the public.	✓	✗	✗	✗	✗	✓
There are sunset clauses in place.	✗	✗	✗	✗	✗	✓

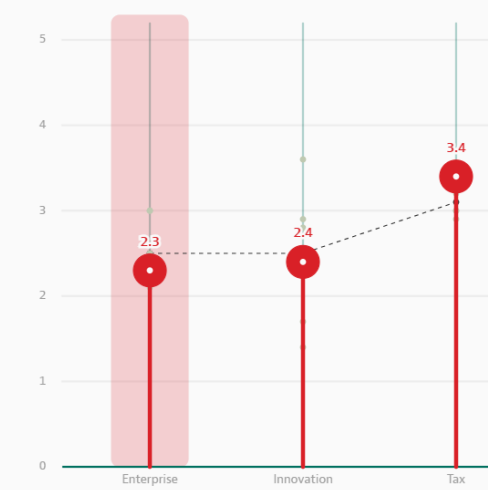


ECONOMY PROFILE VIEW

- An interactive view to more closely examine the **performance** of **any of the Western Balkan economies**
- Sort scores by **dimension**, from **highest to lowest**, or by **change in score** from 2021
- Highlights **key areas of achievement** as well as **areas for further progress**



Dimension score by edition



Policy Dimension 5 State-owned Enterprises

SOEs in Albania operate in a largely decentralised manner, lacking a whole-of-government ownership policy to professionalise ownership practices or to clarify the state's objectives regarding SOEs. Moreover, significant shortcomings in SOEs' board arrangements increase corruption-related risks, including the presence of politically affiliated individuals on SOE boards.



INNOVATIVE, DATA-DRIVEN TOOL

The Data Hub is more than a repository of data – it is a **tool for strategic, evidence-based decision-making**:

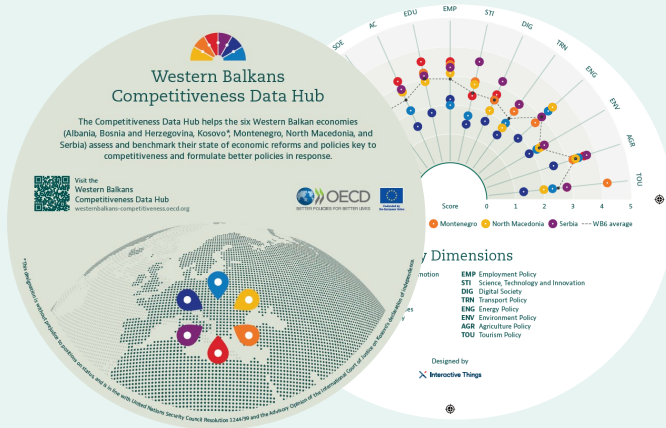
- Can help to **set goals, track progress** and **identify gaps** in implementation and outcomes
- Encourage exchange of **insights, lessons learned** and **best practices**
- Will be **continually updated** with the findings from future assessments, such as the *SME Policy Index: Western Balkans and Türkiye*



The Hub is **not just for policy-makers!** With its vast, accessible data, it is perfect for **researchers** – or **any individual** eager to learn about the region!

THE DATA HUB IS NOW **LIVE!**

- **Laptops available** outside the Conference Centre for you to **explore** the Data Hub
- To access on your phones, use the **QR code** in the **printed materials** on your desks



- Select visuals and key facts and **post to social media** using the Hub's **“share” function**

