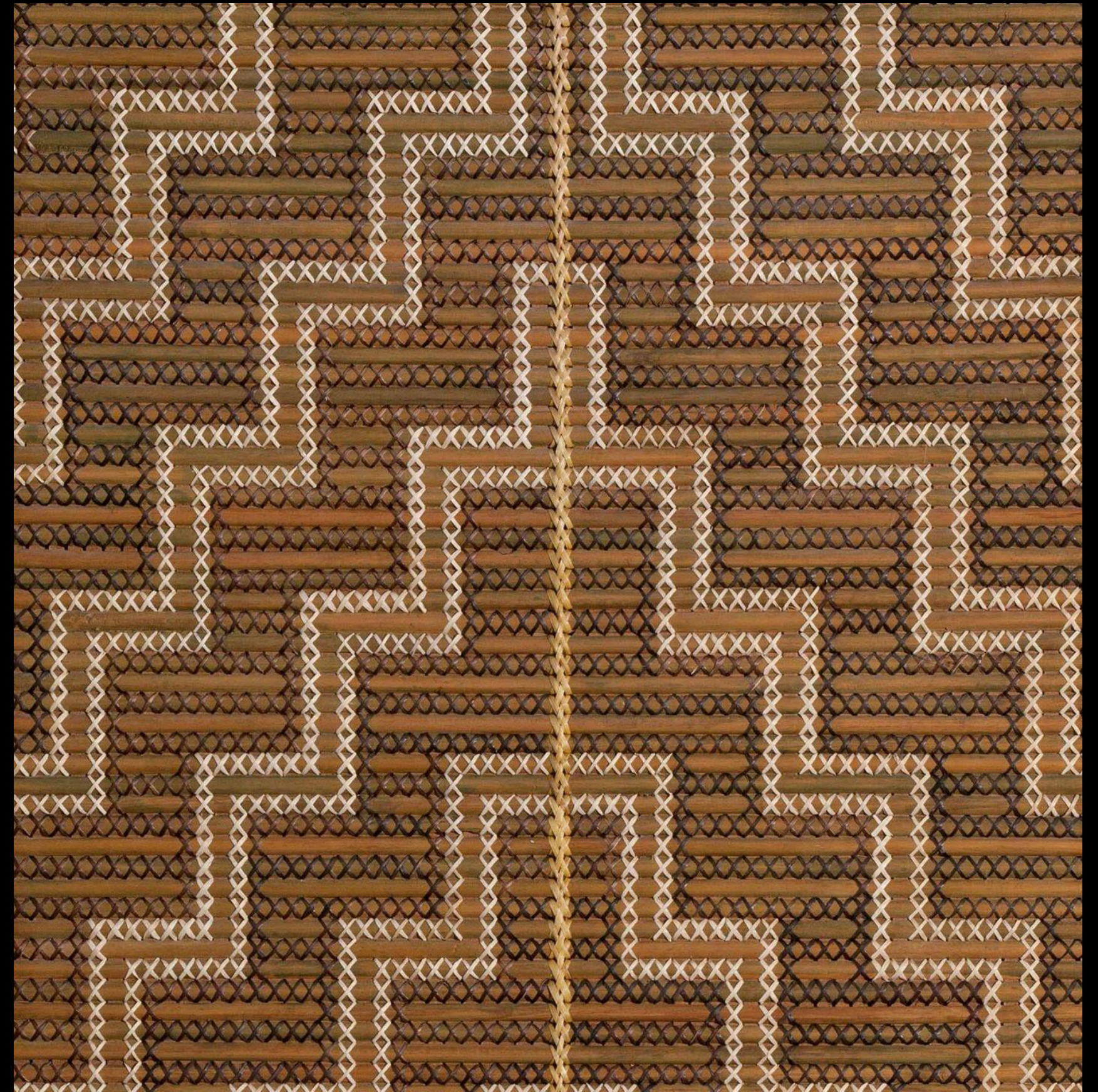


How To Engage with People Like Me

A Guide for Policy-Makers on How to Engage with Frontline Communities





Ka tangi te tītī, ka tangi te kākā, ka tangi hoki ahau. Tīhei Mauri Ora!
E ngā manu o ngā wao tapu o te motu, tēnā koutou katoa.
Ko Ranginui e tū iho nei, ko Papatūānuku e tākoto nei, tēnā kōrua.
Ki te awa Seine me te maunga Montmatre ki tērā, tēnā kōrua.

*The tītī cries, the kākā cries, and I cry. Behold, there is life!
To the birds of the sacred forests of the land, I greet you all.
Ranginui is standing here, Papatūānuku is lying here, I greet you both.
To the river Seine and the mountain Montmatre over there, I greet you
both.*

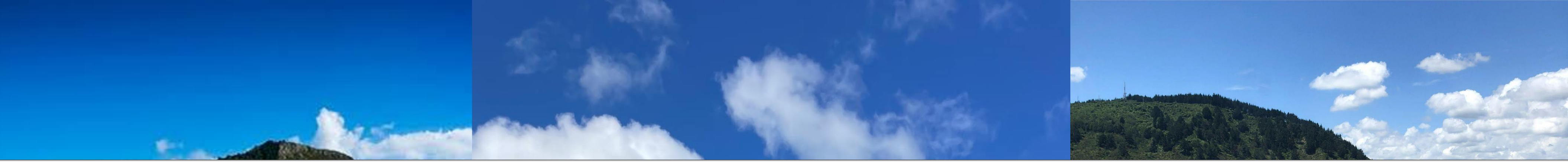




Toitū te marae a Tāne Mahuta, Toitū te marae a Tangaroa, Toitū te Tangata

If the land is well and the sea is well, the people will thrive



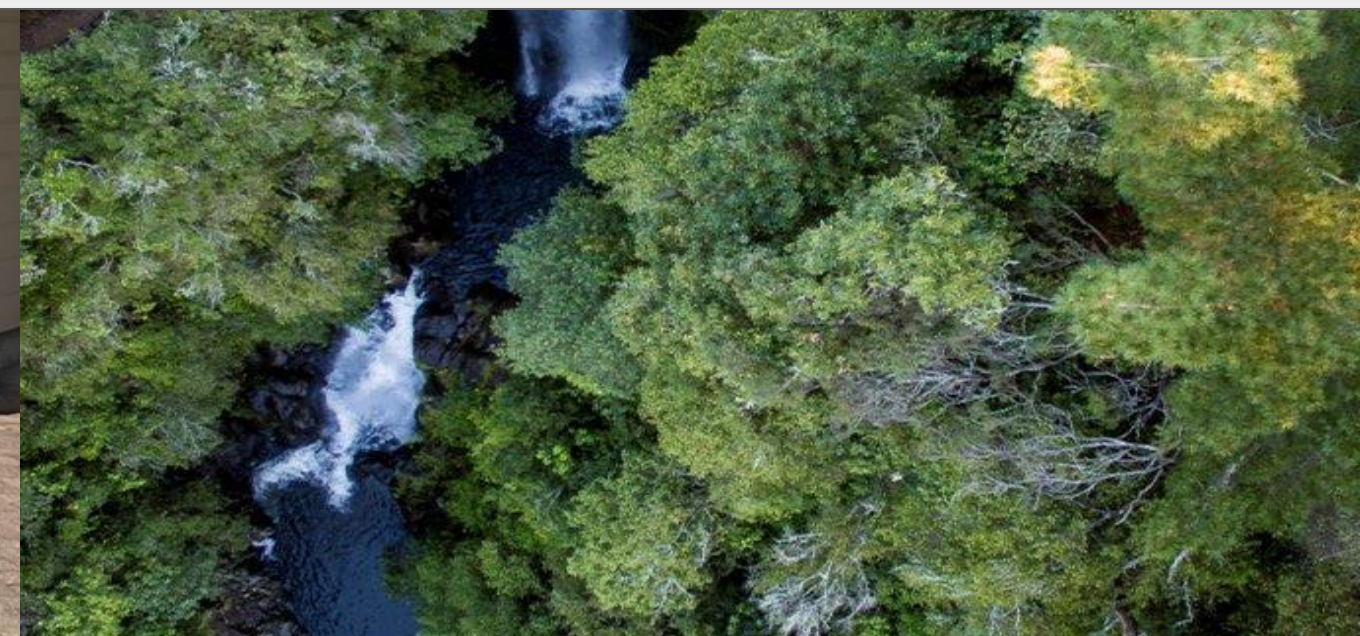


**Ko Mauao me Tararua ōku maunga
Ko Tauranga me Raukawa ōku moana
Ko Waitao me Parirua ōku awa
He uri ahau nō Tainui, Mataatua, me
Tākitimu**

***Mauao is the mountain
Tauranga and Raukawa are the sea
Waitao and Parirua are the river
I am descended from the great canoes of
Tainui, Mataatua and Tākitimu***

Ko Anahera tōku ingoa

My name is Anahera Nin





Ministry for the
Environment
Manatū Mō Te Taiao



He Māori ahau i ngā rā katoa

I am Māori forever and always





Ranga + Tahī = Rangatahi

Raise up, pull up by the roots + as one, together = Young Person



~~Facilitating access to information,
participation, and legal recourse~~

How to engage with people like me



How to engage with people like me

1. Get **frontline communities** in these **spaces**





How to engage with people like me

1. Get **frontline communities** in these **spaces**
2. **Invest in relationships** with **frontline communities**





How to engage with people like me

1. Get **frontline communities** in these **spaces**
2. Invest in **relationships with frontline communities**
3. **Translate and contextualise the jargon pls**



~~Facilitating access to information,
participation, and legal recourse~~

How to engage with people like me



Māori communities must be at forefront of emergency management plans, hapū say

6:31 pm on 28 March 2024

Share this     

Iwi quietly donating to marae and hapū affected by Cyclone Gabrielle

 1News

Quote of the Year announced: 'Nah, we're just three Māori boys'

Mikey Kihi, Rikki Kihi and Morehu Maxwell rescued more than 50 trapped Esk Valley residents during Cyclone Gabrielle.

Dec 19, 2023

'Get out of the way' and let Māori help whānau - Housing advocate

8:28 am on 31 March 2023

Share this    

A public health expert wants the focus of any government inquiry into Cyclone Gabrielle to be on Māori communities, which he says were the most vulnerable and hardest-hit, but also among the most resilient.



How to engage with people like me

1. **Get frontline communities in these spaces**
2. **Invest in relationships with frontline communities**
3. **Translate and contextualise the jargon pls**
4. **Get out of the way!**





TINO RANGATIRATANGA Self-determination



HE HURINGA IAHUARANGI

ART RANGATAHI



RANGAHI LED INITIATIVES
ENCOURAGE TOHENGA PRACTICE

WAIKUA

HINENGARO

TINANA

TAMARIRI MAORI AT KOHUNGA KURU WE ARE THE MAINSTREAM ENOUGH KURA!

LOVELY TREATY PARTNERS

ACCOUNTABLE COUNCIL WITH RESPECT LOCAL IWI!

COLLECTIVE WHANAU SUPPORT SYSTEMS

BY MĀORI FOR MĀORI

MORE / NEW MARAE FOR GROWING HAPT

RENEWABLE ENERGY SOURCES IN THE ROHE

HAVE OUR PLACES SCREAM PŪRAKAU

EXERCISING OUR TINORANATIRANGA

MĀRAMATAKA LED MAHI ONE WITH TAIAO

LOCALLY SOURCED BUILDING MATERIALS

LIGHT COVERS

THRIVING TAONGA SPECIES

BRING BACK NGATI HUIA

NATIVE FOREST RESTORATION HEAL THE NGAREHERE

RONGOA TO LOOK AFTER OUR HAUORA

WĀNANGA TRADITIONAL KNOWLEDGE

ACTIVE KAITIAKI

CIRCULAR WASTE SYSTEMS

REMOVE PIPES FROM MAHINGA KAI

FLOURISHING NATIVE BIRDS

SELF SUSTAINING

EMERGENCY KID "PAND" RELOCATIONS

PĀTAKA

TOI MĀORI AT THE MARAE

BARE FOOT MOKO

PARRS & RECREATION

TAUATAPU

WALKING TRACK THROUGH THE ROHE

SAFE WALKABLE MUSTI AHOA MUSTI AHOA TRAILS

ORGANIC FABRIC WARE ONLY

PROTECTION OF SIGNIFICANT SITES

LAND BACK

MĀRA KAI ORGANIC COMMUNITY GARDEN

FRUIT FOREST

NEW WATER TREATMENT PLANT

TOM TOM EXPRESS

PARA KORE

SEAWALL TO PROTECT US FROM SEA LEVEL RISE

PĀ HARAKEKE AT ALL OUR WETLANDS

KOHA BASED ECONOMY

AWARUA TO NOT BE SO MAUIUI

MORE WETLANDS IN LOWLAND AREAS

SEAWEEDS

KAITIAKI MUKUKAI TANIWAHA FROM TARANAKI TO TARA

THE MIGRATION OF OUR TAONGA TUNA RESTORED

SAFE AND ACCESSIBLE FISHING AND KAI GATHERING LOCATIONS

NEW MARAE ON KAPITI

STAR NAVIGATION

ART RANGATAHI RONGOA RETREAT learn about self healing + Māramataka

ABUNDANCE OF KAIMOANA

NO TAMAITI LEFT BEHIND

SAVE THE WHALES!!

How to engage with people like me

1. **Get frontline communities in these spaces**
2. **Invest in relationships with frontline communities**
3. **Translate and contextualise the jargon pls**
4. **Get out of the way!**
5. **What's good for MĀORI/frontline communities is good for everyone**





Toitū te whenua

The land is permanent

Toitū ngā iwi

The people are sustained

Toitū ngā rangatahi

The young people are sustained

Toitū te Tiriti

The Treaty is permanent

